

11.30.23

Bellringer

Analyze Art Sheet

USE COMPLETE SENTENCES

Put at the back of your folder
(in the brads)

Kinetic Art

**Uses movement as part of
the art installation**



ARTIST: Alexander Calder
SCULPTURE: Snow Flurry, 1948

TORN PAPER TREES



Instead of using crayons or paint, we can use material like construction paper & tissue paper to add color and texture to our art!

1. Draw your triangle tree
2. Tear up your tissue & construction paper into small pieces
3. Add glue inside your triangle tree
4. Arrange your paper inside the tree
5. Add sequins or pompoms to decorate your tree!

3 GNOMES



MOUNTAIN POLAROID

SAN LUIS SNOWGLOBE



SAN LUIS MINIATURE



MOUNTAIN
POLAROID

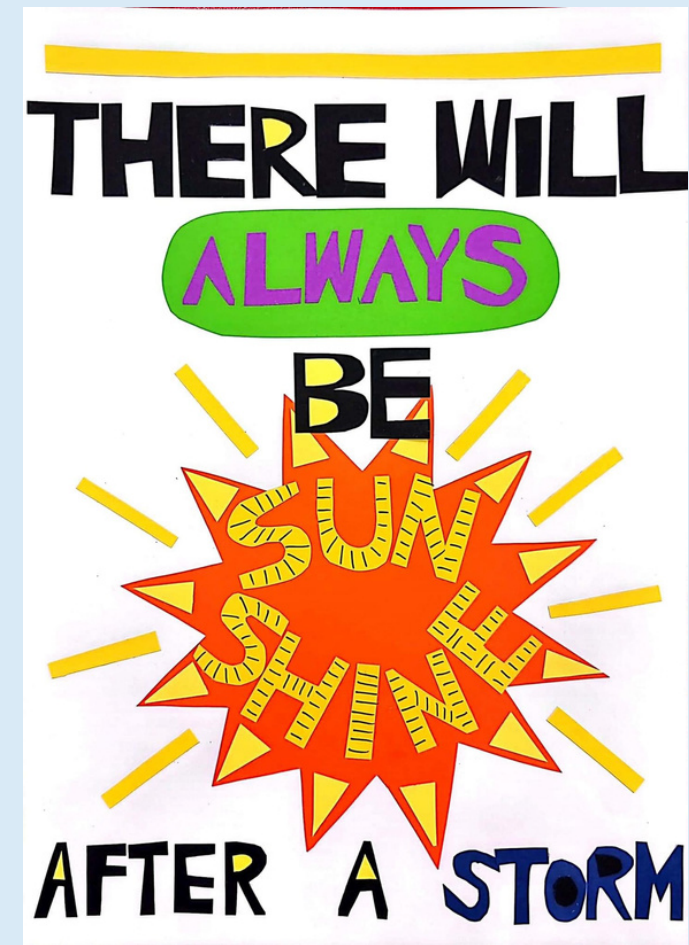
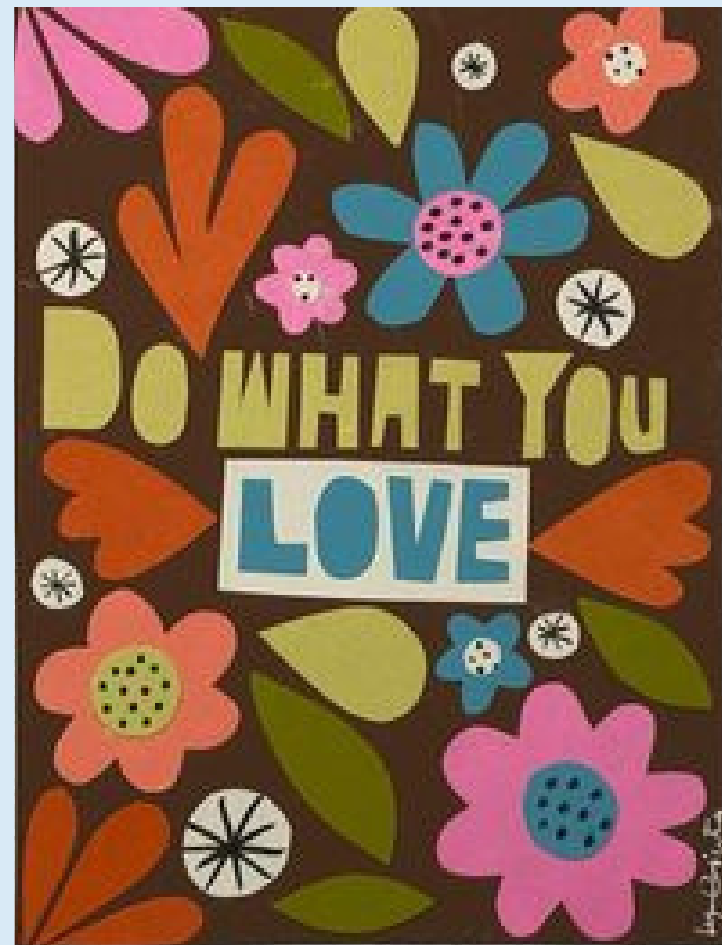
CHRISTMAS
OR WINTER
ELEMENTS



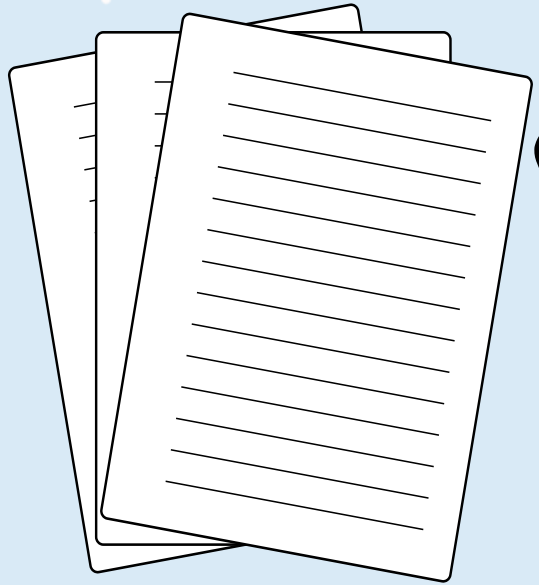
SAN LUIS
SNOWGLOBE



LIKE THIS...BUT NOT SO...POSITIVE.

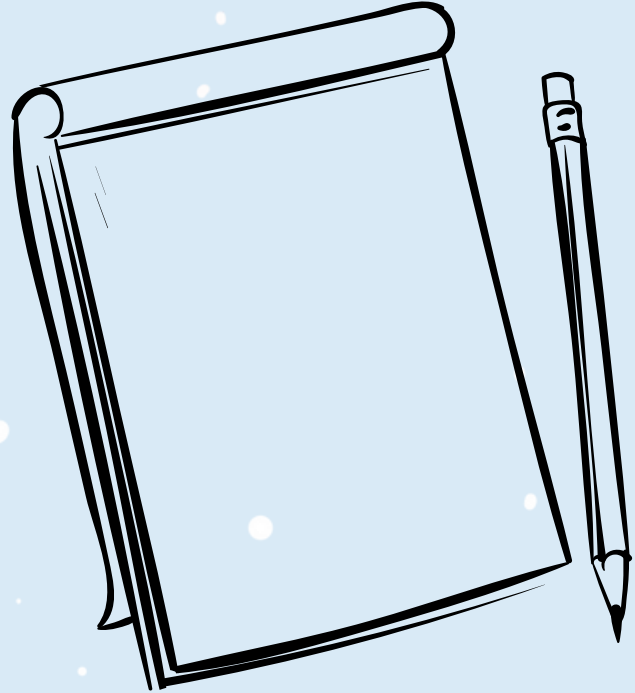


PROJECT STEPS



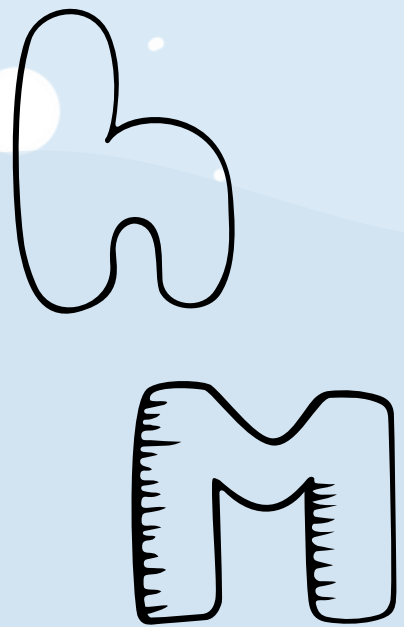
1

pick a word/phrase from the provided sheet



2

sketch a layout of the definition on scratch paper



3

draw your letters and elements on different colors of construction paper and cut out.



4

arrange letters & elements of your word/definition on **BLACK** or **WHITE** cardstock paper and glue in place.

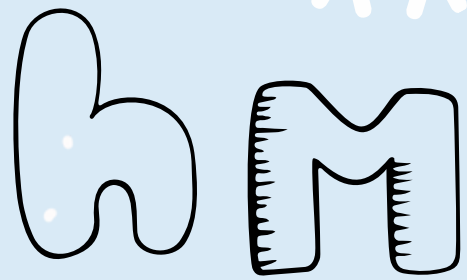


**Reminder: Stricter
consequences for
racial slurs and
derogatory insults
means being more aware
of what you say**

You don't know any other words to use because you've used these for so long, so now you don't know how you're going to properly insult one another and not get suspended.



PROJECT STEPS DAY 2



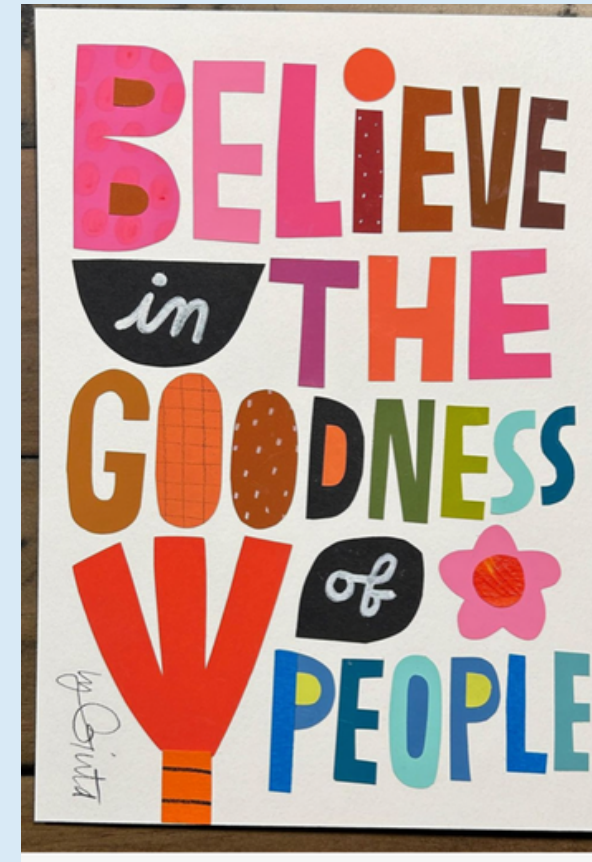
Draw your letters and elements on different colors of construction paper and cut out.



Arrange letters & elements of your word/definition on white cardstock paper & glue in place.

Checklist to see if you're **ACTUALLY** finished:

- You included **WORD** and **DEFINITION**
- There are no big white spaces or gaps where you left it empty.
Add other designs and elements to fill up space.

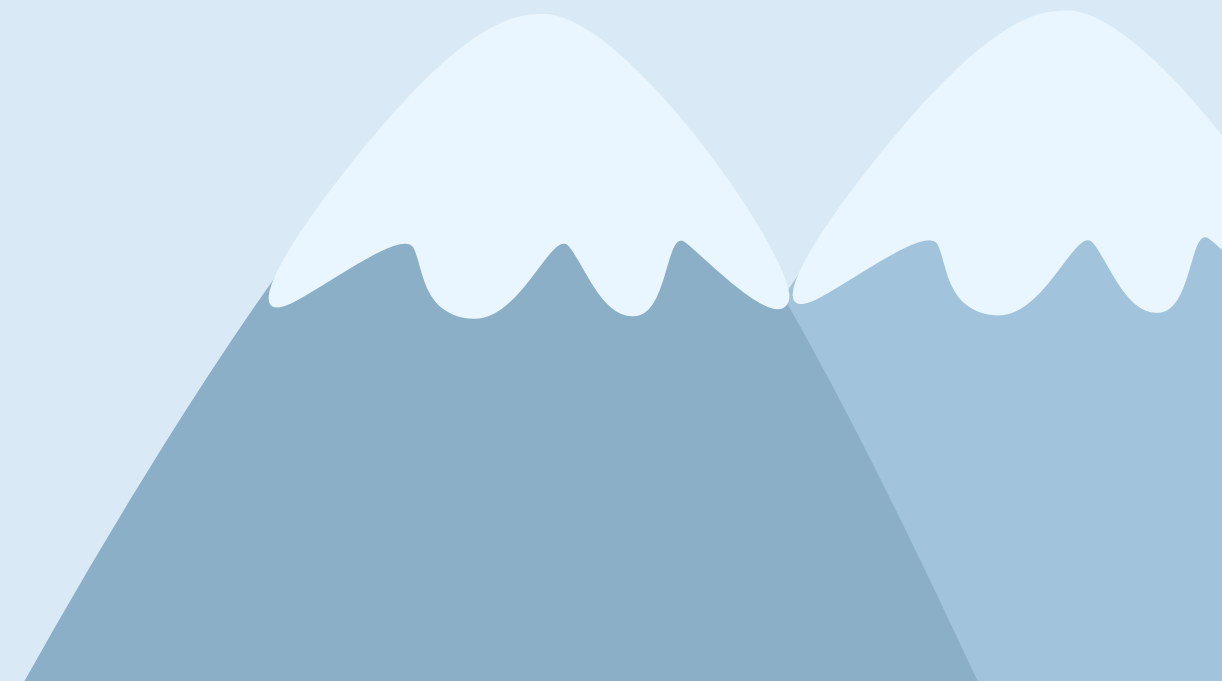


NEVER FEAR!

**I GOTCHU...
WITH ART!**



OLD FASHIONED INSULTS PAPER COLLAGE



11.29.23

Bellringer

Analyze Art Sheet
USE COMPLETE SENTENCES
Put at the back of your folder
(in the brads)



ARTIST: Helen Frankenthaler
PAINTING: Winter Hunt, 1958

11.28.23

Bellringer

Analyze Art Sheet
USE COMPLETE SENTENCES
Put at the back of your folder
(in the brads)



ARTIST: Edvard Munch
PAINTING: Winter, 1889

BONUS QUESTION: what other painting have we learned about by Edvard Munch?

11.27.23

Bellringer

Analyze Art Sheet
USE COMPLETE SENTENCES
Put at the back of your folder
(in the brads)



ARTIST: Wassily Kandinsky
PAINTING: Winter Landscape, 1909