

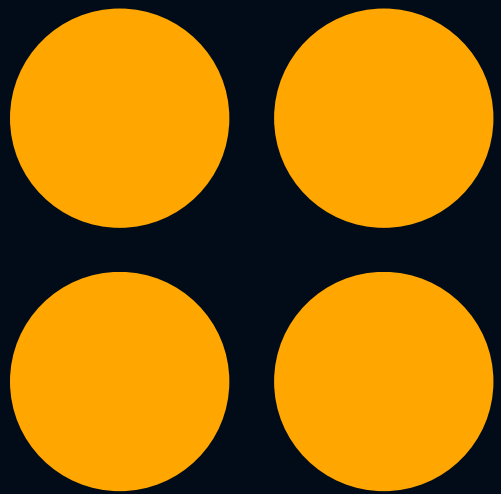
PRINCIPLES OF DESIGN:

SYMMETRY & BALANCE

SYMMETRY

Symmetry in art is a **formal type of balance** that consists of mirroring portions of an image.

A symmetrical drawing has **identical parts mirrored** across the symmetry line, implied or actual.



Symmetrical

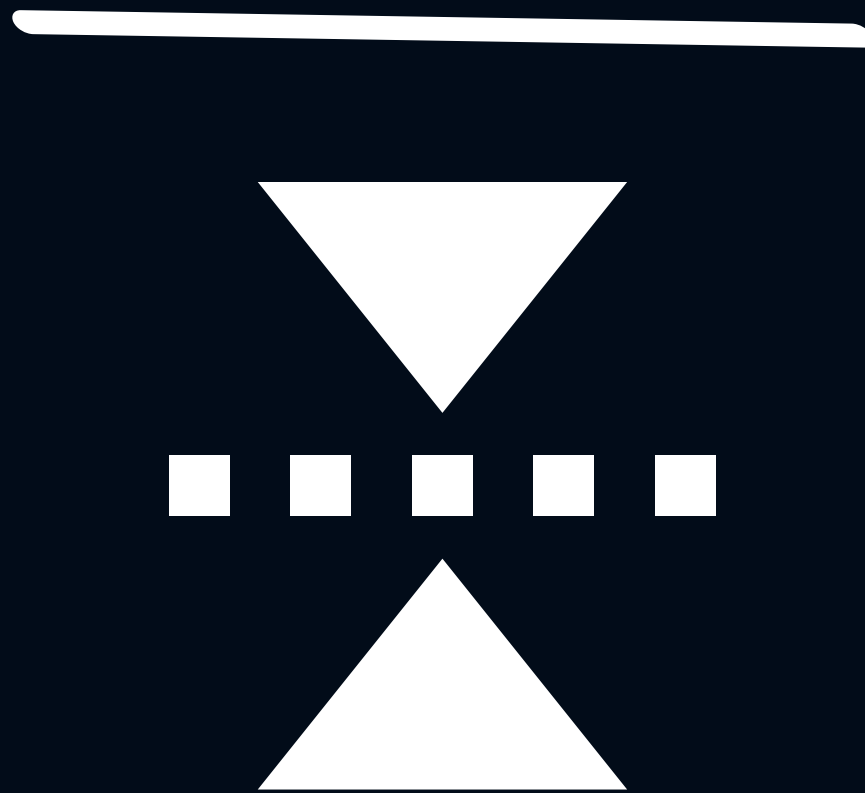
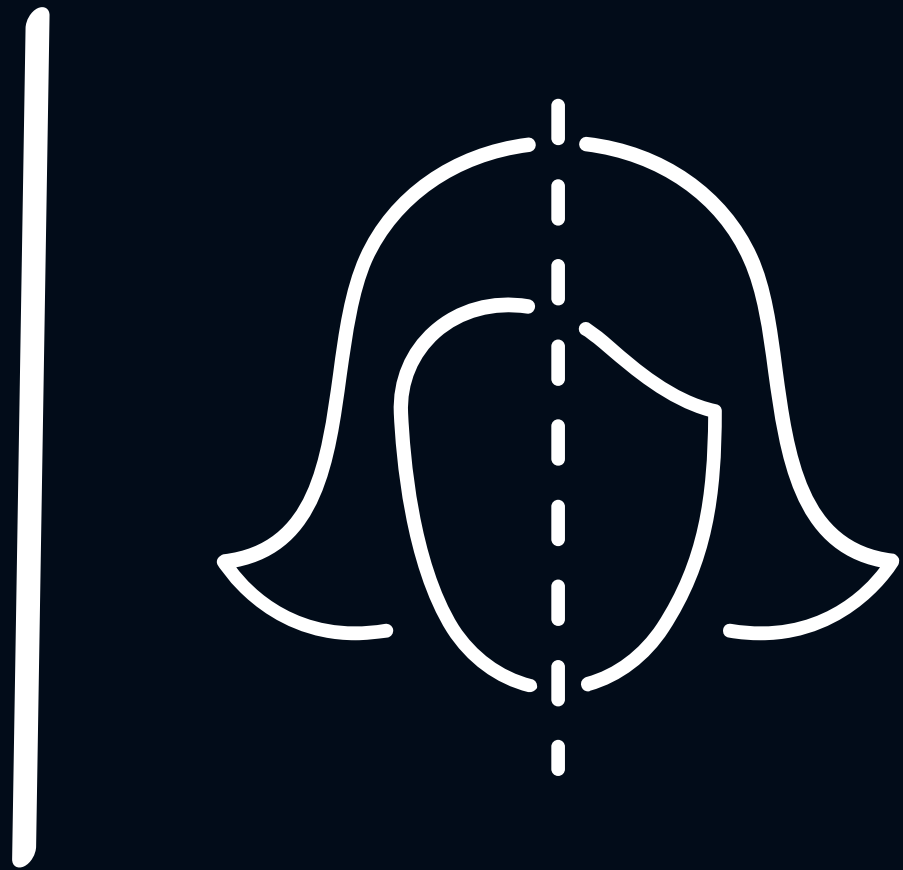


Asymmetrical

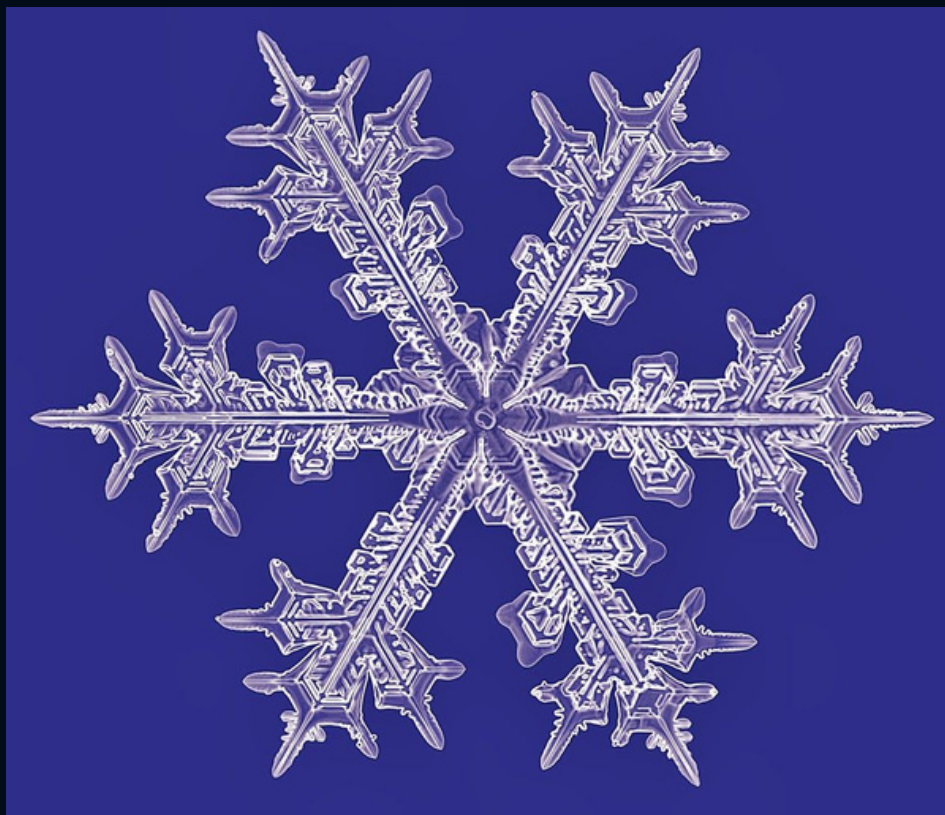
Symmetry can be found almost everywhere in nature, even in the human body itself, starting from your very own face. Leaves, flowers, fruit, butterfly wings.

Symmetry is also quite common in many major architectural works and styles – it gives buildings a tone of power, stability, and monumentality.

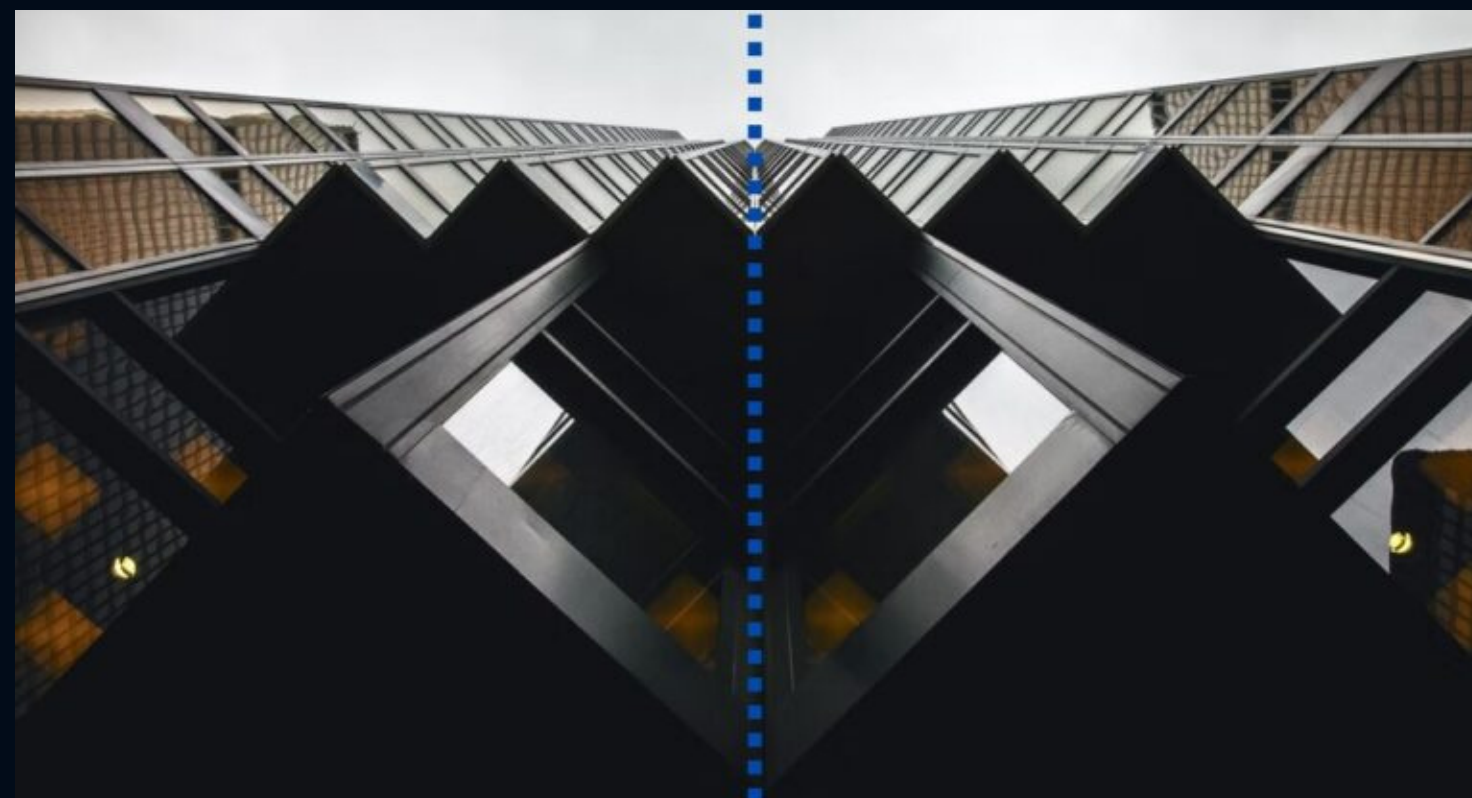
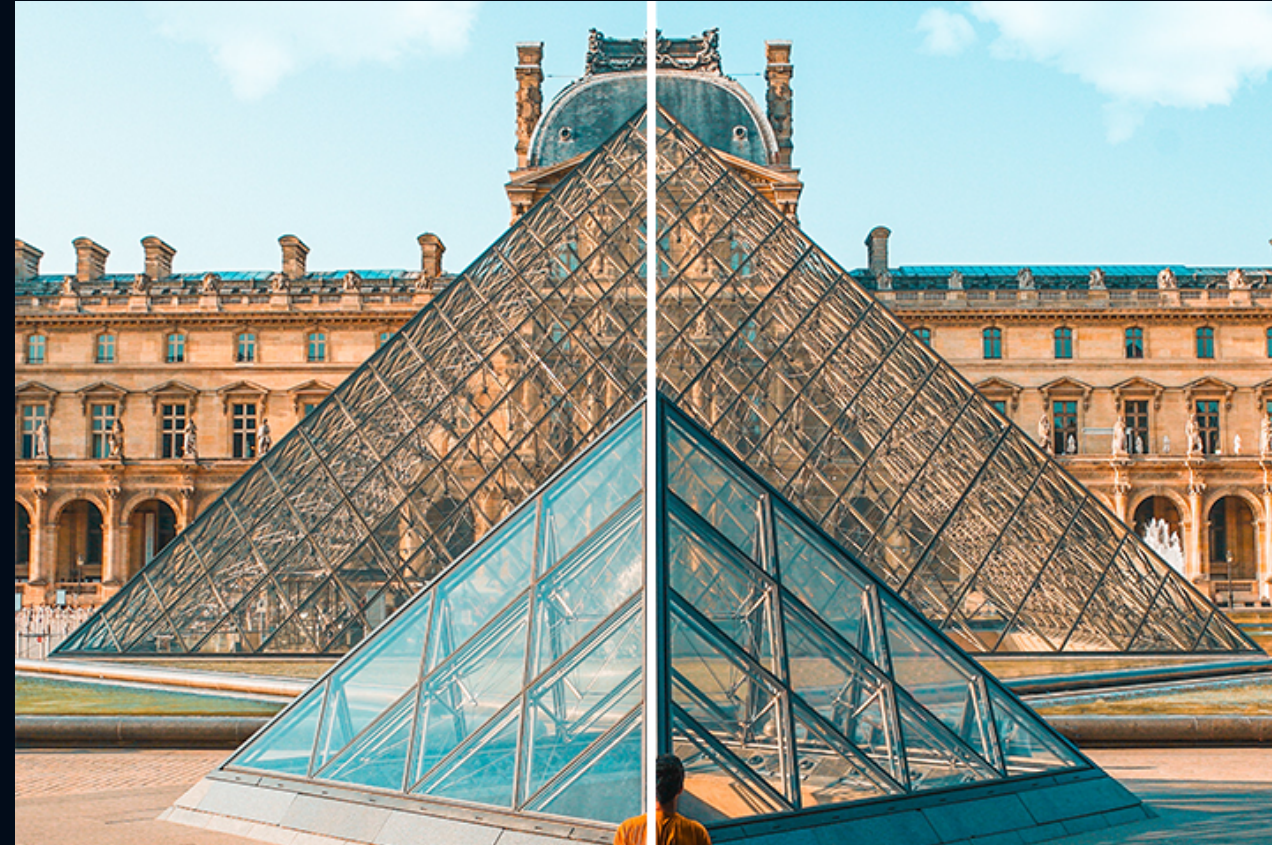
LINES OF SYMMETRY



SYMMETRY IN NATURE



SYMMETRY IN ARCHITECTURE



SYMMETRY IN TALAVERA TILES



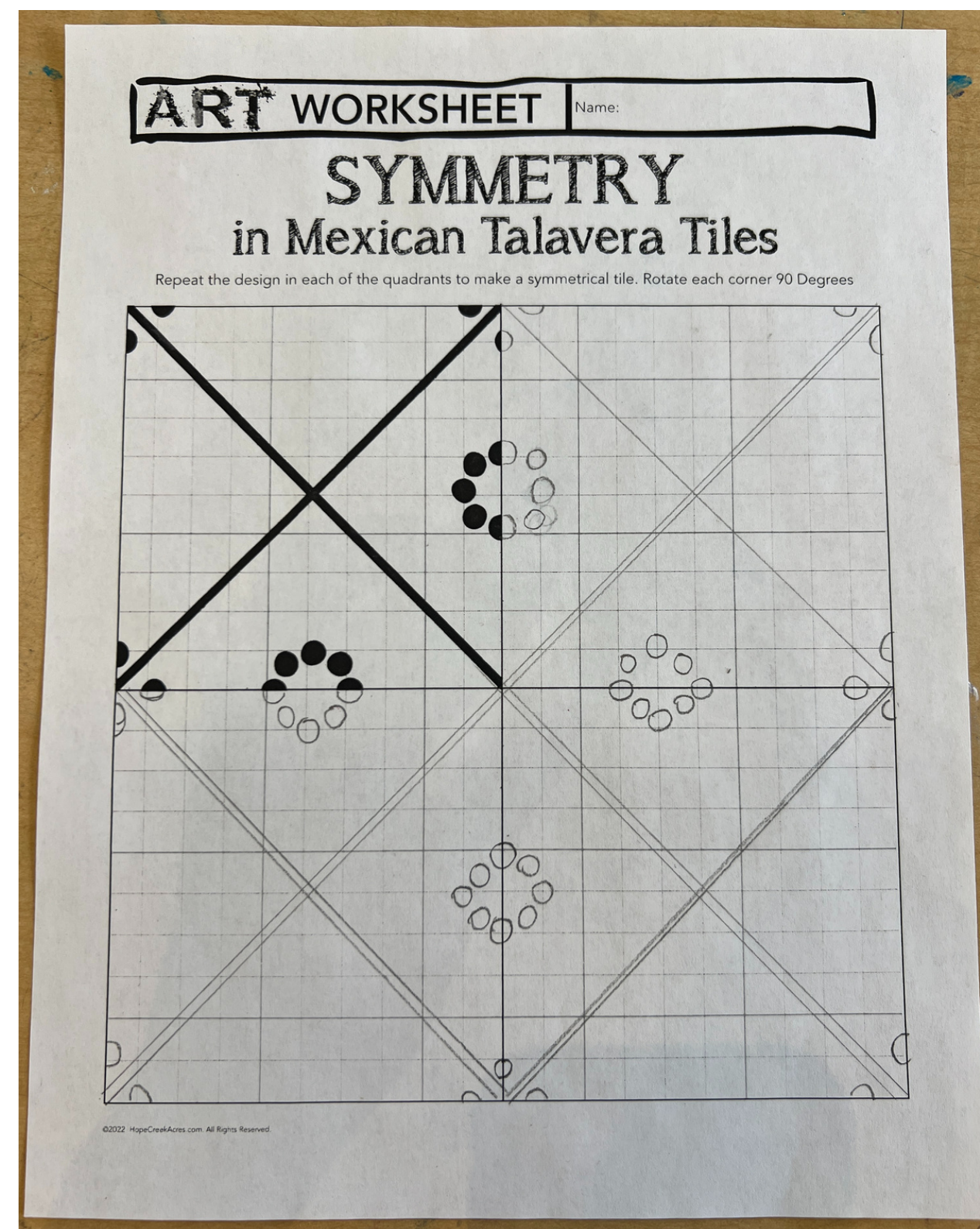
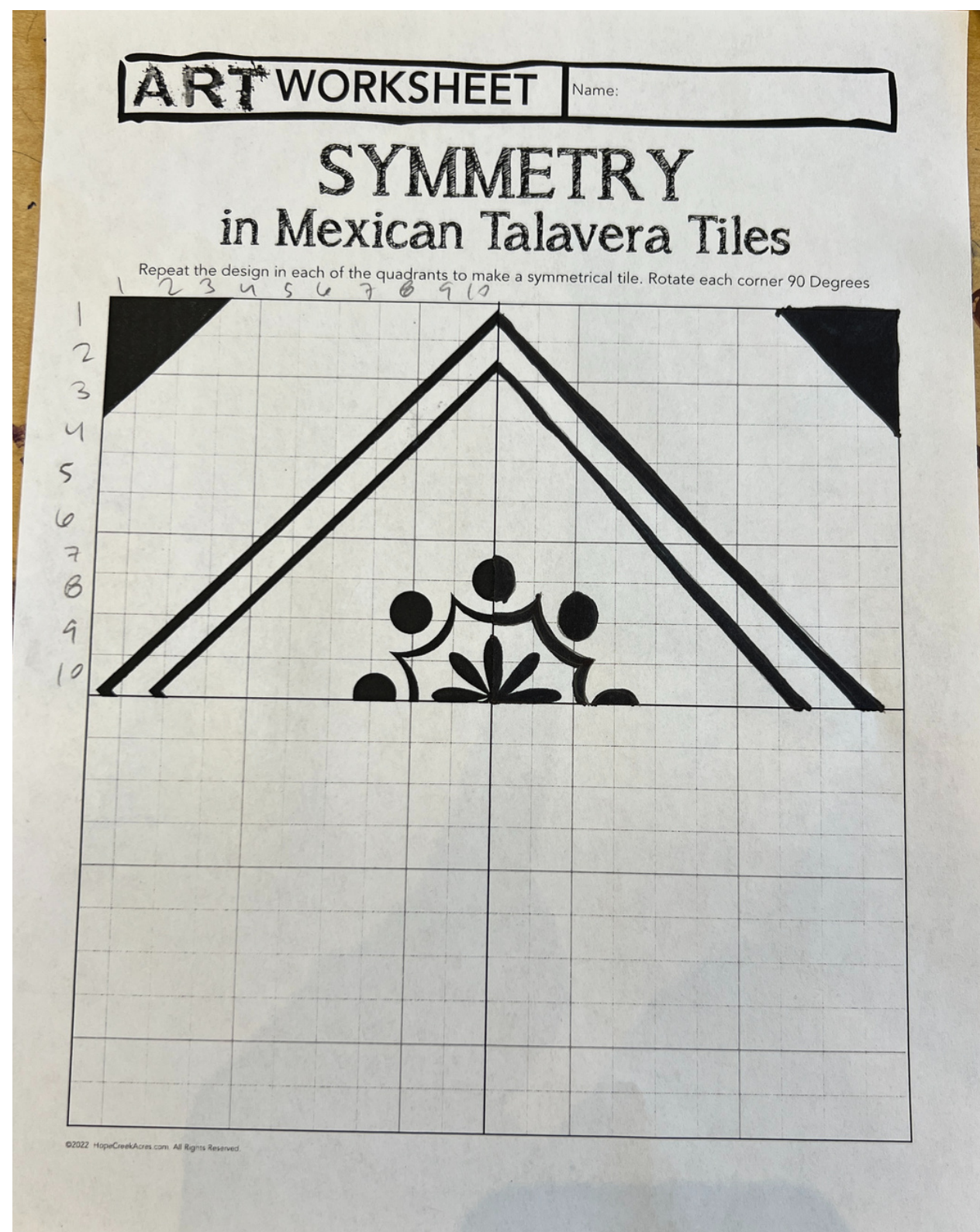
Mexican Talevera, as we know it today, has its origins in the Spanish city of Talavera de la Reina.

With the colonization of central America, monks and Spanish artists brought the Talavera pottery genre to the New World where European styles blended with native craftsmanship.

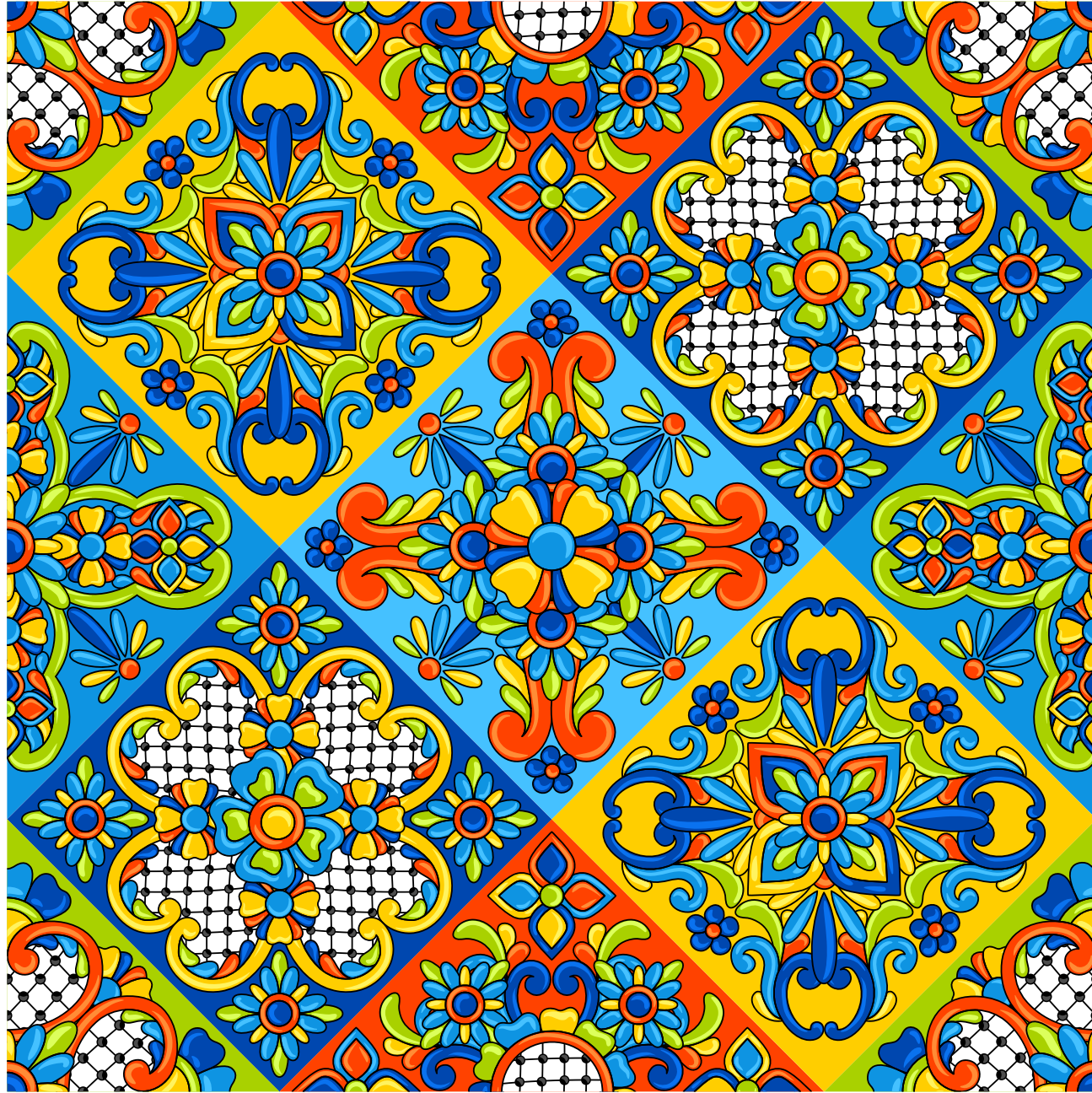
The tile work is almost always symmetrical due to the need to repeat the pattern in large areas. Mexican Talavera tiles are handpainted and have very unique patterns



Complete Talavera Tiles worksheets



SYMMETRY IN TALAVERA TILES



Complete Talavera Tiles worksheets

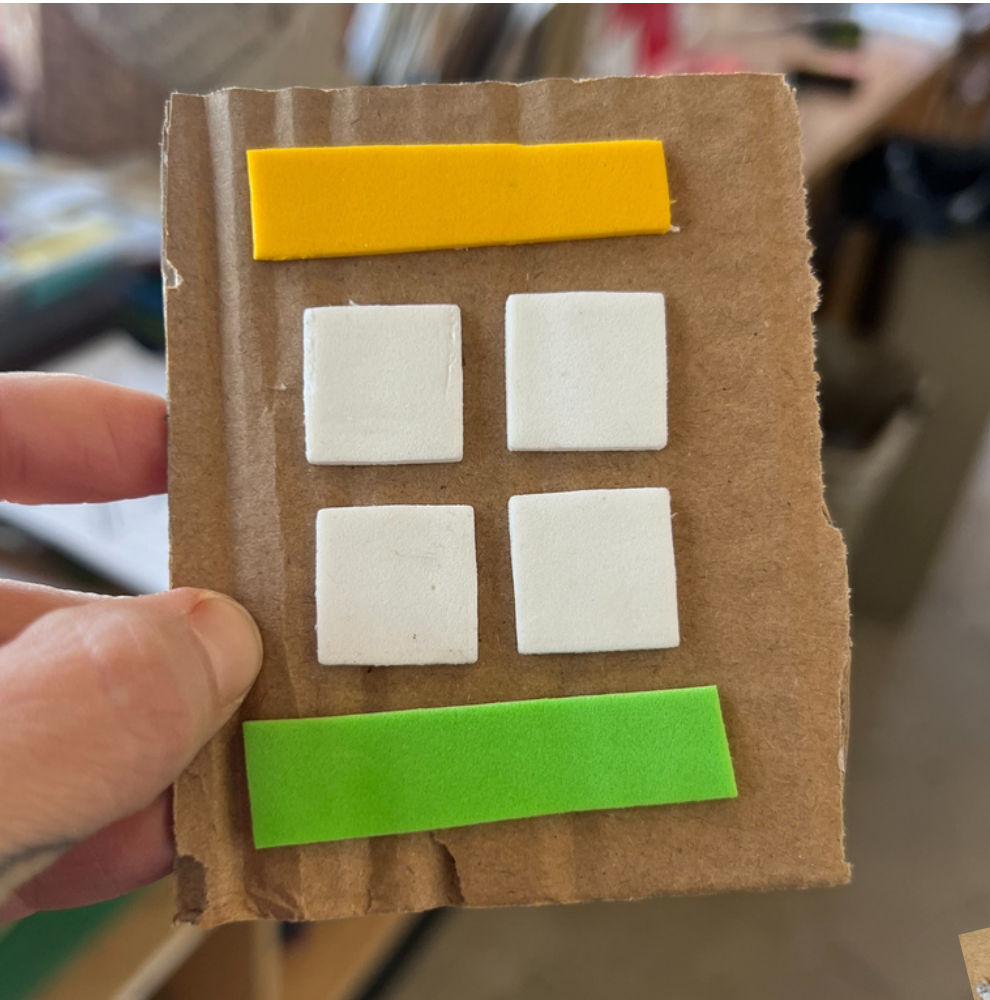
Number your horizontal and vertical axis lines

Pick your favorite design from the worksheets

Begin drawing your design onto your cardboard "tile" that will be painted



SYMMETRICAL STAMP PRINTS



Attach foam sticker shapes to your cardboard to create a stamp

