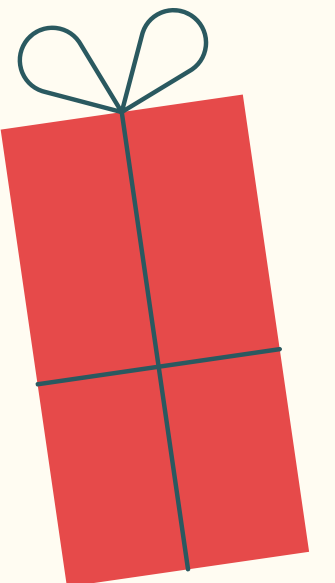




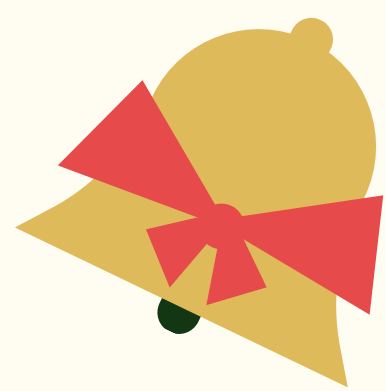
DECEMBER 4, 2023

BELL RINGER: ELEMENTS OF ART – LINE

1. **Line:** An element of art defined by a point moving in space.
Line may be two-or three-dimensional, descriptive, implied, or abstract.
2. **Line is important in art because it can be used to suggest shape, pattern, form, structure, growth, depth, distance, rhythm, movement and a range of emotions.**
3. **Draw half a face or head on your sheet.**



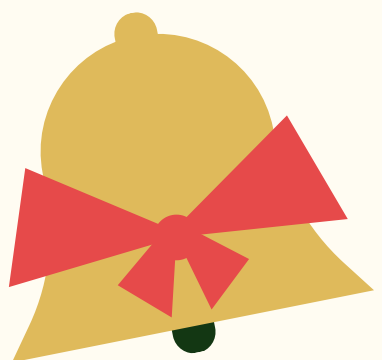
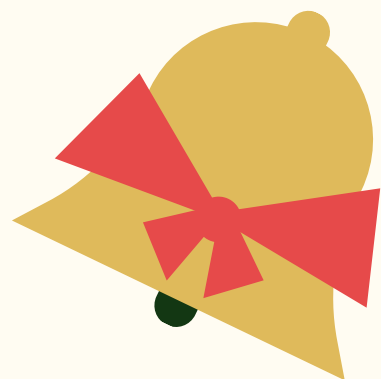
THERE WILL BE
A FINAL IN ART



THE FINAL WILL INCLUDE:

- Detailed information about 4 of the 7 elements of art (line, shape, color, texture)
 - Other topics we have covered so far: perspective, alebrijes, Frida Kahlo, Kandinsky's "The Dot," Huichol yarn paintings, etc.

There will also be one essay-style question where you talk about a project you enjoyed this semester and include information about the materials used, the steps to create it, what you created, and why you liked it.

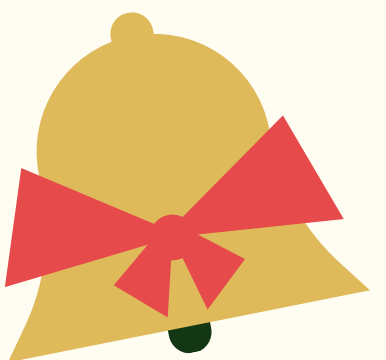
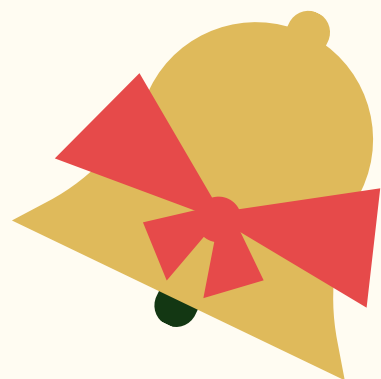


TO STUDY:

Take pictures of the bellringer slides and your bellringer pages

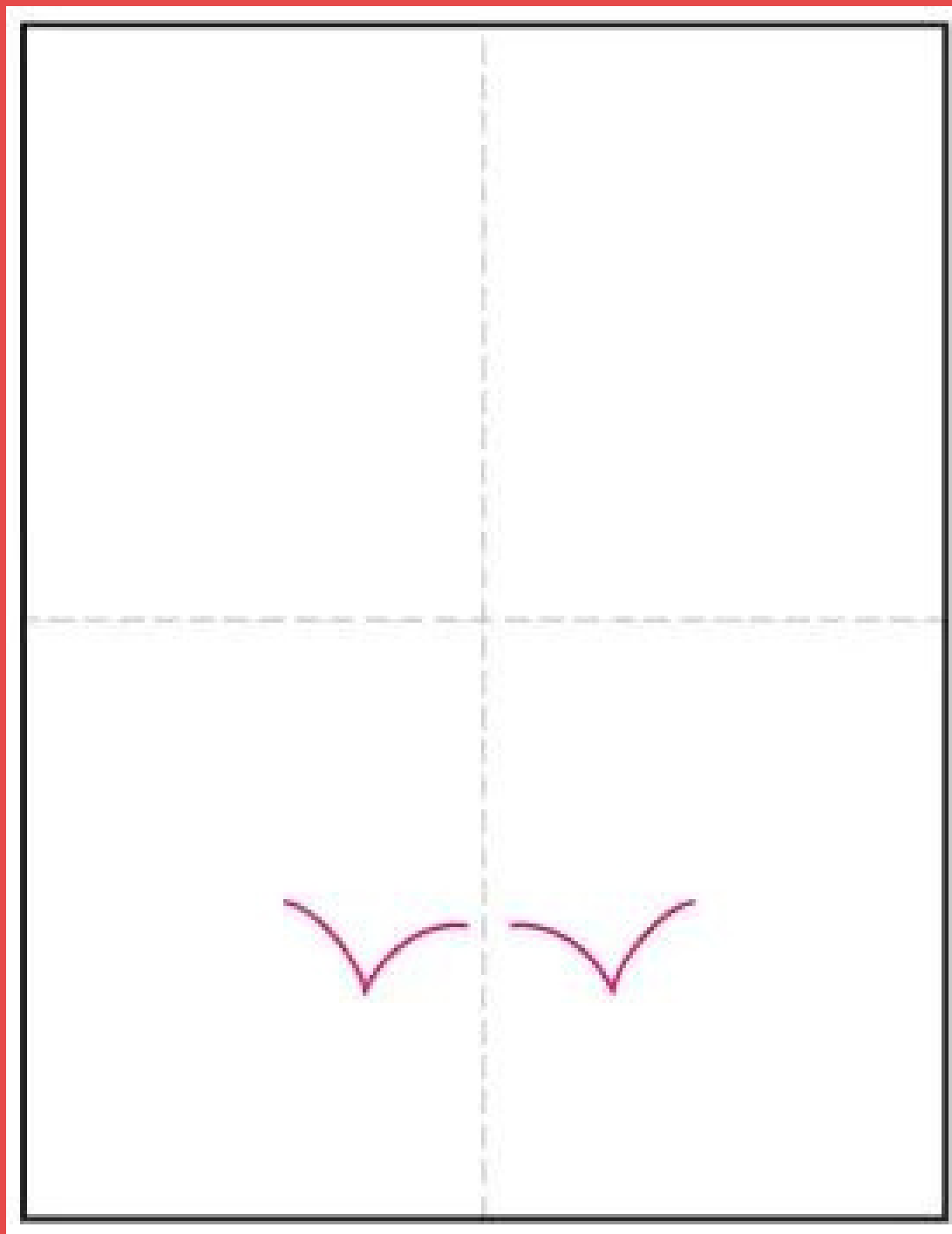
Canva Slides from our lessons will be posted on my website that you can use

Brainstorm a project you enjoyed and write down the steps to make sure you remember/have a good understanding of the project before the final.

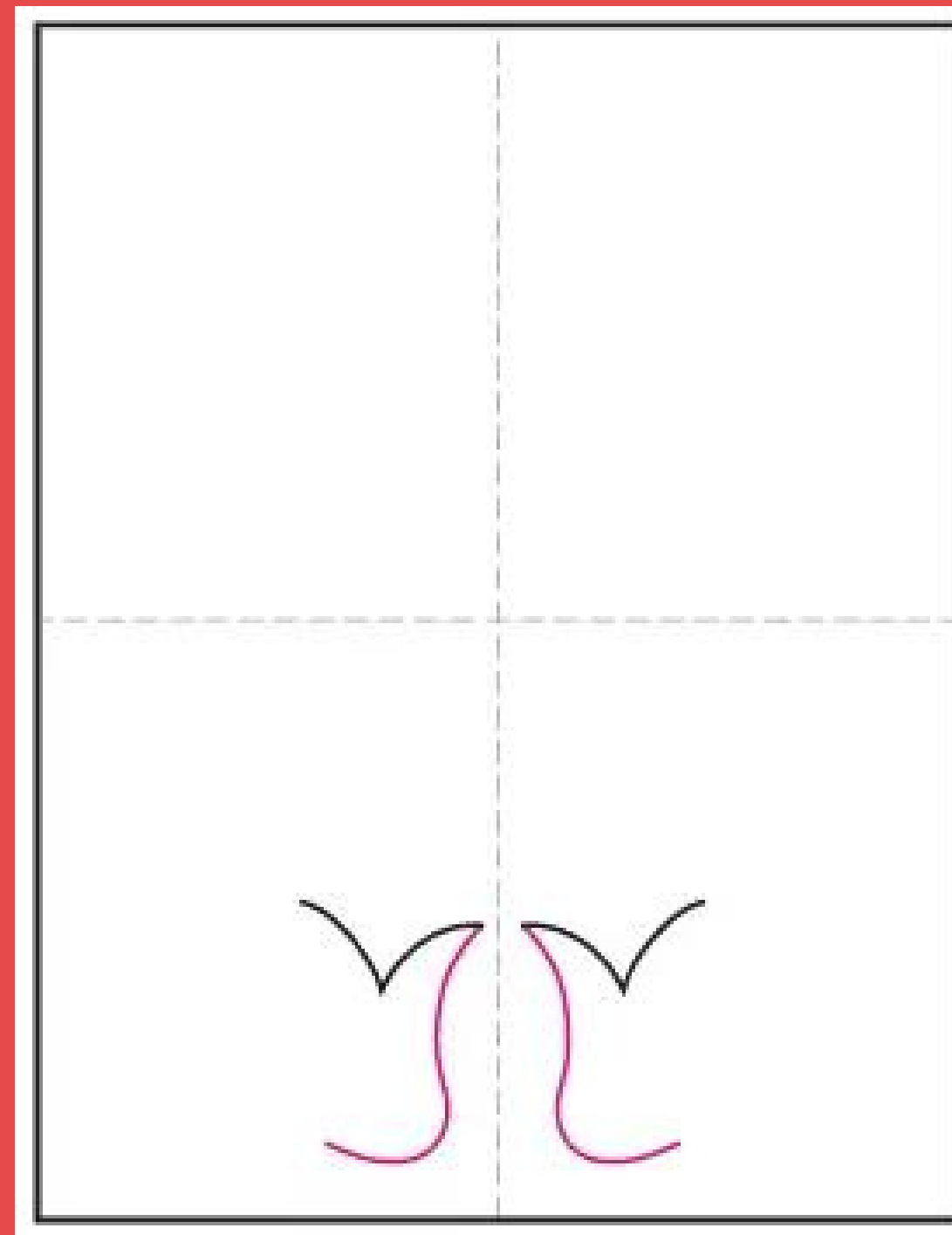


ELF SHOES

01 Start the shoes with two V shapes

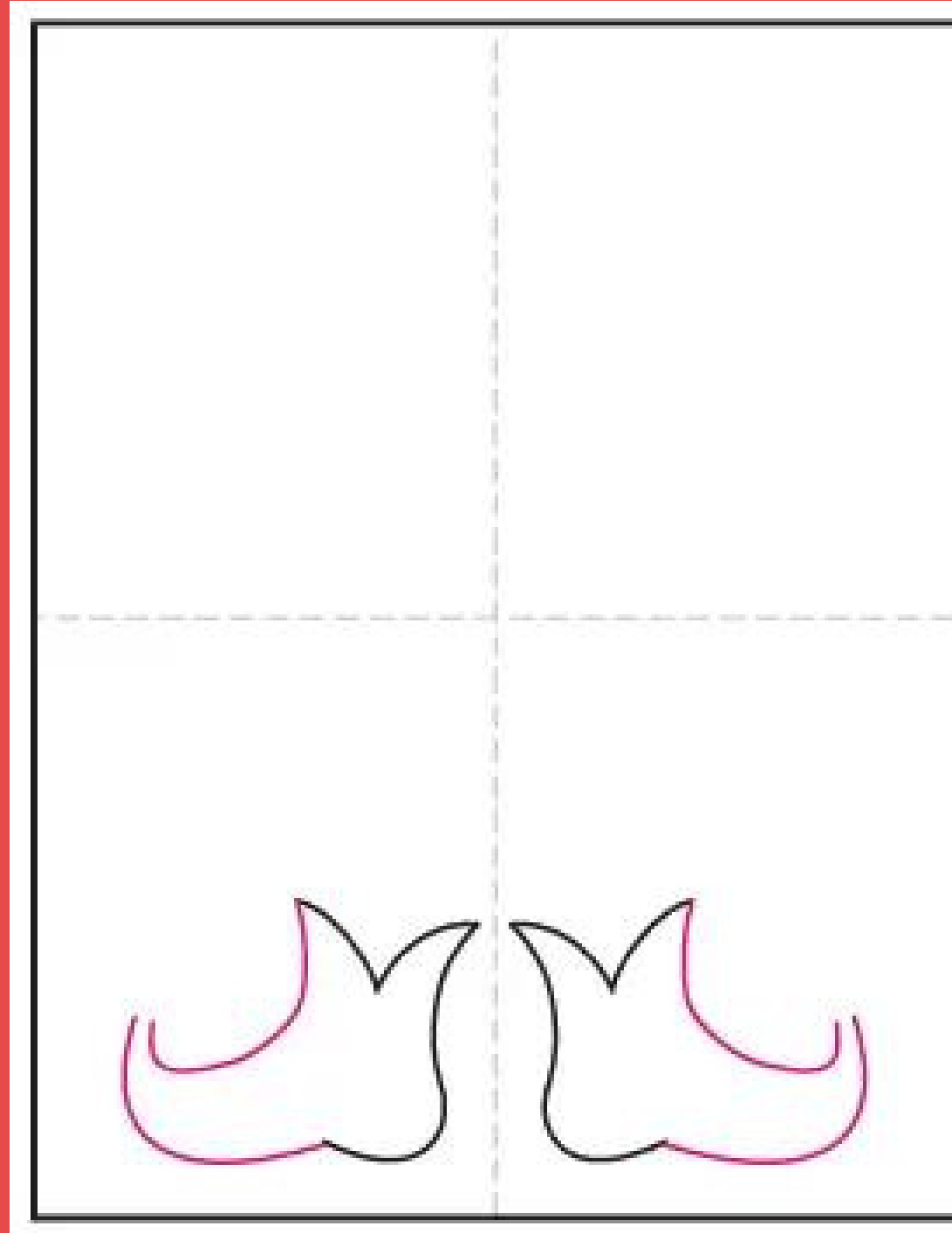


02 Draw symmetrical heels

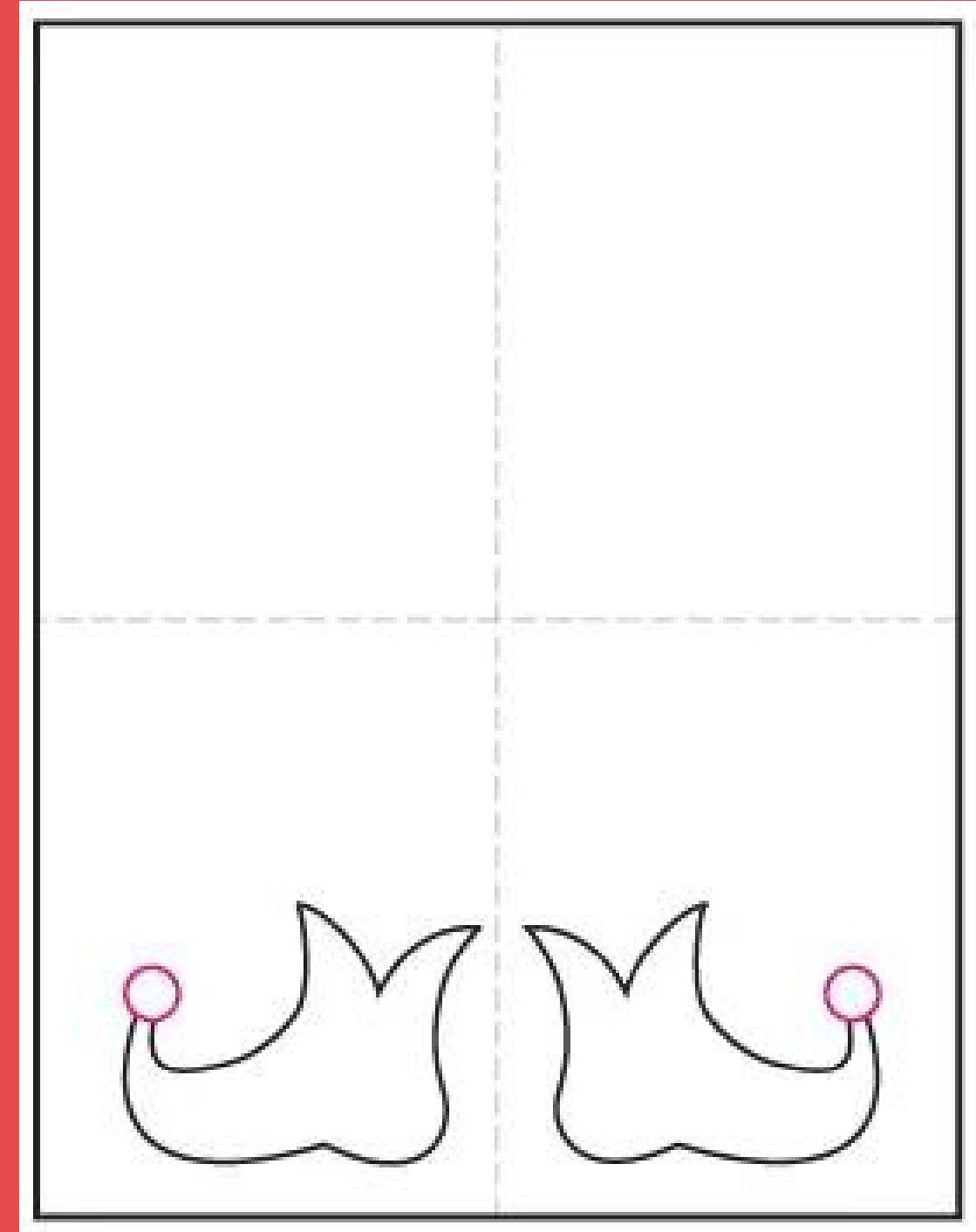


ELF SHOES

03 Add matching shoe tops & bottoms

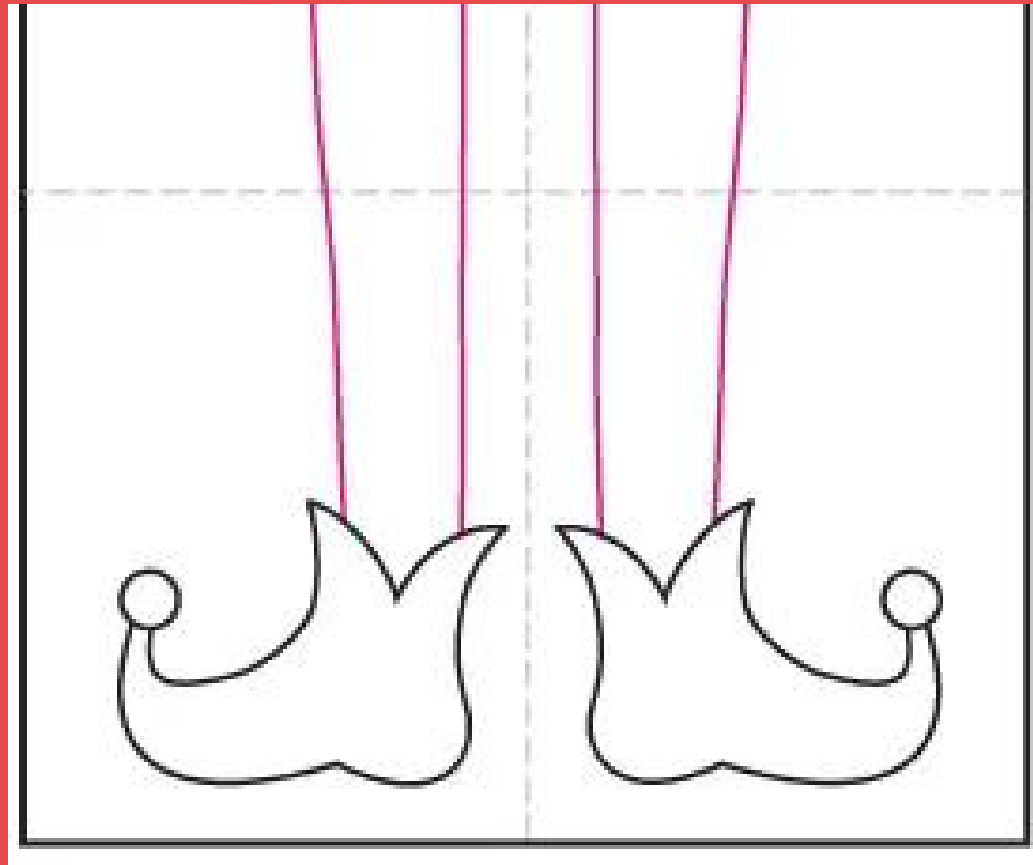


04 Finish with a ball or bell shape

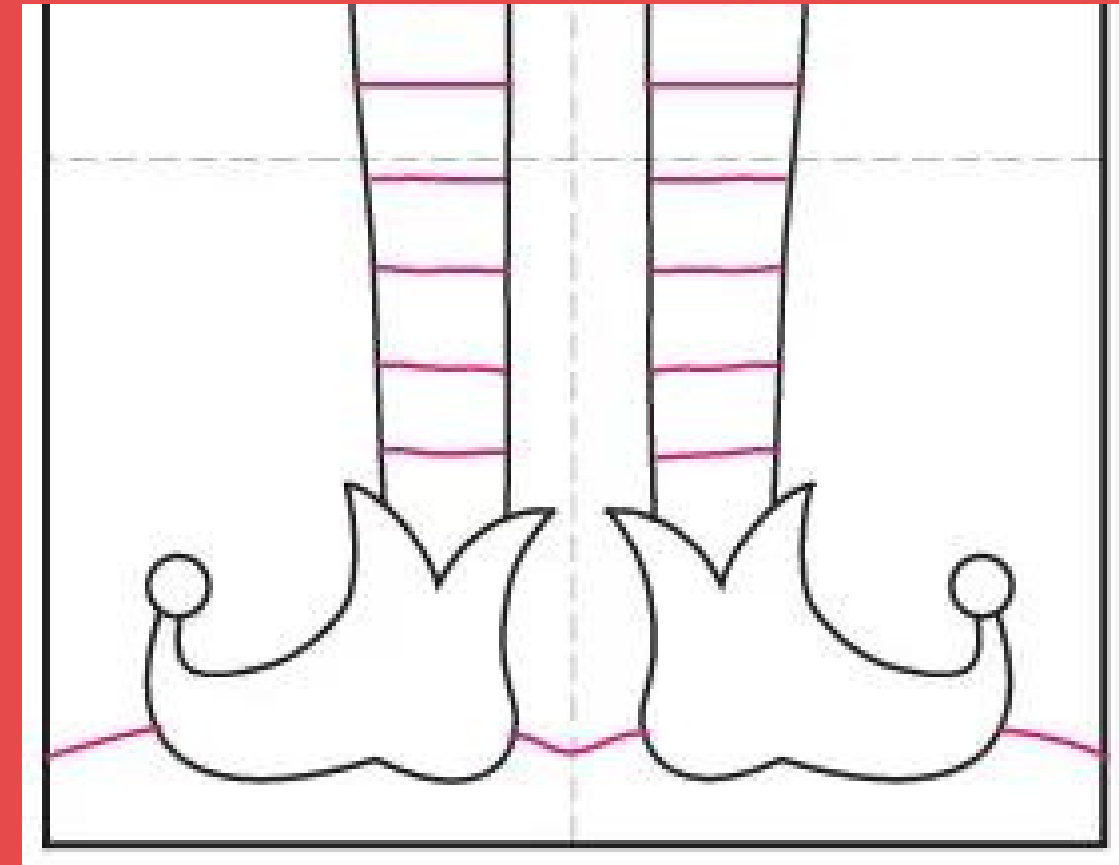


ELF SHOES

05 Add the legs, extend to top of paper



06 Draw snow ground, add lines and patterns to legs



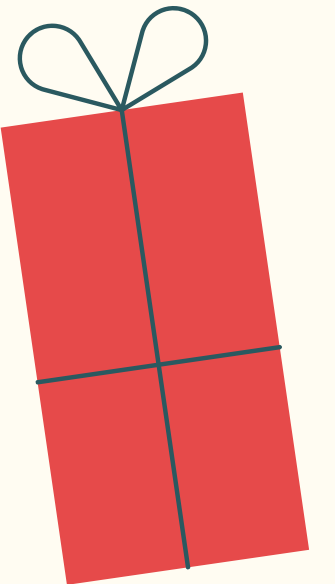
07 Outline in sharpie and add color!
LOTS of color. Not one color. Not scribble scrabble.



DECEMBER 5, 2023

BELL RINGER: ELEMENTS OF ART - LINE

1. Describe the element of art, line, in your own words.
2. Create 4 of your own line patterns in the provided boxes.



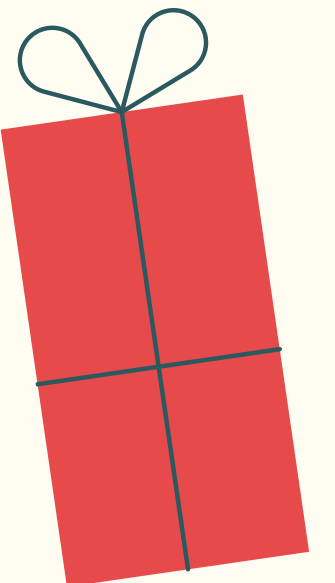


DECEMBER 6, 2023

BELL RINGER: ELEMENTS OF ART – SHAPE

1. **Shape:** An element of art that is two-dimensional, flat, or limited to height and width. Shapes can be geometric (square, circle, triangle, etc.) or freeform/organic.

2. Using only **GEOMETRIC** shapes, draw the face of a dog on your sheet.





DECEMBER 7, 2023

BELL RINGER: ELEMENTS OF ART – SHAPE

1. Tell me about shape and its importance in your own words. Include the different TYPES of shapes.
2. Using only FREEFORM shapes, draw some Christmas ornaments.

